

CURVA AD AMPIO RAGGIO PN25

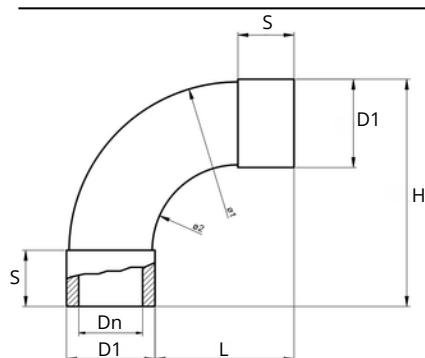
BEND PN25



| ARTICOLO | MISURE mm |
|----------|-----------|
| CODE | SIZE mm |
| CAR 20 | 20 x 20 |
| CAR 25 | 25 x 25 |
| CAR 32 | 32 x 32 |
| CAR 40 | 40 x 40 |

SPECIFICHE TECNICHE

TECHNICAL SPECIFICATIONS



| CODE | Dn | ø1 | ø2 | D1 | S | H | L |
|--------|----|-----|----|----|----|-------|------|
| CAR 20 | 20 | 126 | 73 | 28 | 21 | 86 | 65 |
| CAR 25 | 25 | 132 | 67 | 34 | 22 | 89 | 55 |
| CAR 32 | 32 | 162 | 94 | 44 | 25 | 109 | 84 |
| CAR 40 | 40 | 104 | 57 | 55 | 27 | 140,5 | 85,5 |

Tutti i raccordi TORO 25 sono compatibili con tutte le serie di tubi TORO 25.
All TORO 25 pipe fittings are compatible with all TORO 25 pipe series.

STANDARDS:

- ISO 15874
- ISO 15494
- DIN 8077-78